

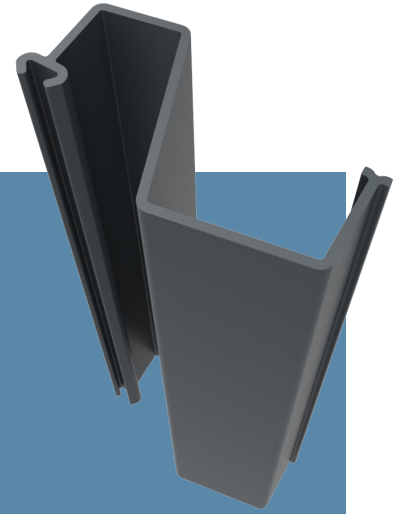


## Europile Plastic Pile Specifications

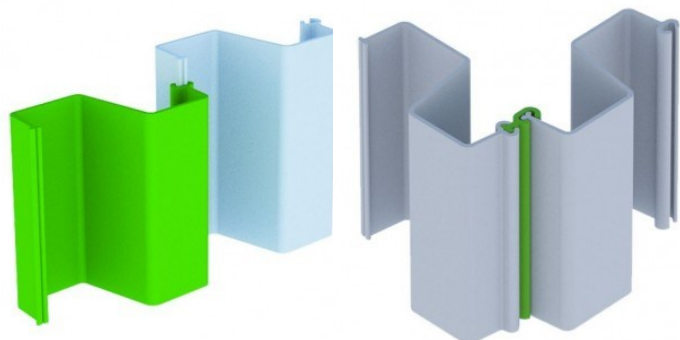
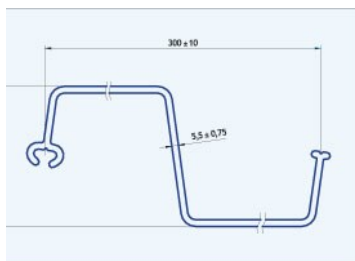
The Europile was the first major innovation upon the basic EcoZ design. It offered a much improved interlock design; improving water tightness and strength.

It also consolidated the design options of the EcoZ, the coverage of a ribbed format with the strength of the Box - the best of both worlds.

From an installation view point this much stronger & rigid plastic pile is much more efficiently installed; therefore can be handled and driven in longer lengths.



Ultimate Moment	kNm/m	12.8
Allowable Moment (FOS=3) (M)	kNm/m	4.27
Section Modulus (Z)	cm <sup>3</sup> /m	320
Moment of Inertia (I)	cm <sup>4</sup> /m	1800
Effective Pile Width	mm	300
Depth of Section	mm	115
Thickness	mm	5.5
Material		Recycled PVC
Weight per m (product)	Kg	4.3
Modulus of Elasticity	MPa	2000



Unit 19 Cinder Road Zone 3 Burntwood Business Park Staffordshire WS7 3FS

Tel: 01543 677290 | Mob: 07775 710648 | Tel: 0845 519519 7

Skype: apeplasticpiling Twitter: @plasticpiling www.plasticpiling.ninja