

The Hammerman Equipment

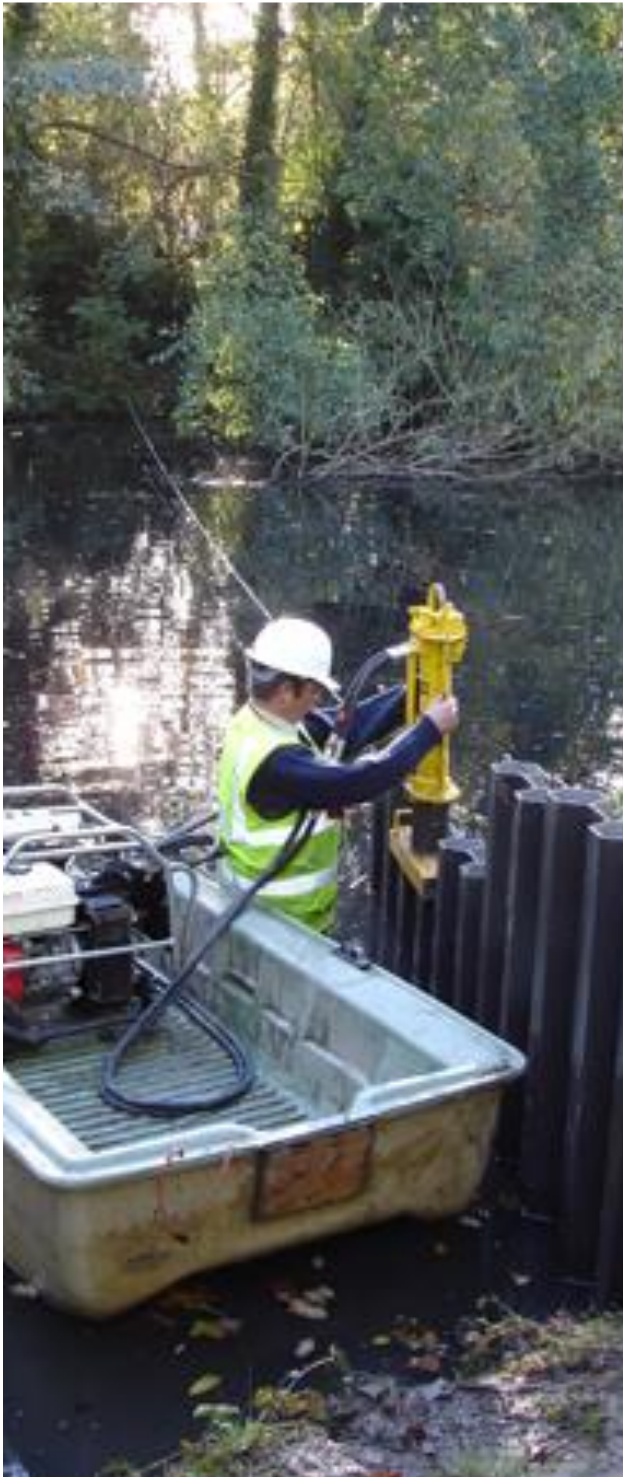


Handheld Pile & Post Drivers



Handheld Pile & Post Drivers
Plastic Piling Mandrels
EMS Series Mini Piling Vibrators

Tel: 01543 677290 . 0845 7 519519 . 07775 710648 @thehammermanco
www.plasticpiling.co.uk
www.jetfiltereurope.co.uk

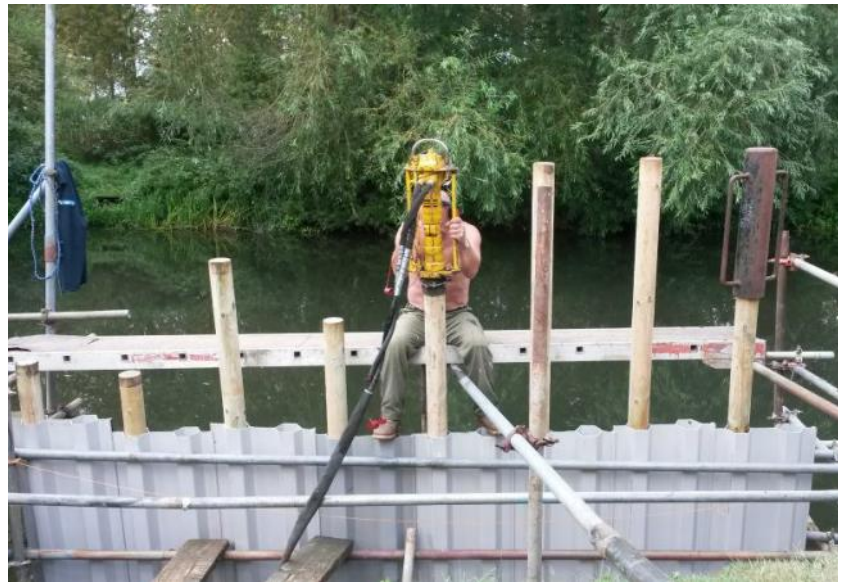


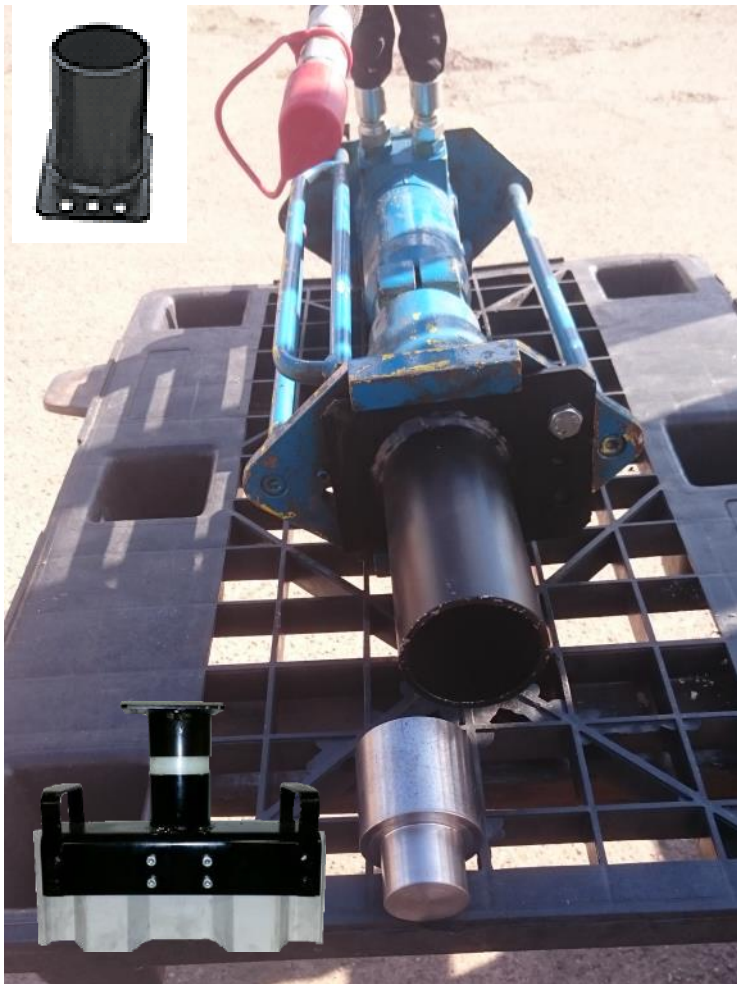
THE PD1 handheld hammers

The PD1 handheld post and sheet driver is a small hydraulic powered impact hammer. These units are available for hire or purchase, complete with hydraulic powerpack.

It has been introduced into our fleet for applications where equipment needs to be small and portable - back gardens and riparian applications are the main market.

Proven and popular for the installation of nicospan posts and backing anchor piles. The equipment has proven exceptional popular for the festival and exhibition events market - installing barriers and also for the installation of solar panel supports.





The Atlas Copco PD1 is not only a very compact units, but the combination of it and its very portable hydraulic powerpack provides a substantial advantage over conventional air powered equipment.

The PD1 unit weighs 34kgs, considerably less than traditional air hammer pile drivers and vibratory hammers. Yet substantial enough that the device remains on the pile rather than hopping off. The PD1 units are available for hire or purchase with a 30lpm powerpack.

The photos opposite illustrate a sample of our growing number of guides, enabling the PD1 to suit a wide range of plastic sheet piling, steel trench sheeting, posts and tubes.

Sheet piling guides are supplied with a plastic cylinder to enable the operator to easily switch from one pile type to another. The plastic also serves to reduce the noise levels.

The units are designed to accept a high back pressure in the return line, and as such can be powered off almost any hydraulic breaker pipework.





Specifications	PD1
Blows per minute	1320 (at 20 lpm) 1680 (at 30lpm)
Service Weight inc hoses and adaptor	34 kgs
Flow required	20-30 lpm
Pressure	105 - 140 Bar
Energy per blow (based upon LH280 handheld breaker)	85 - 105 Joules/ blow
Vibration level 3 axes 20 lpm	12.8 m/s
Sound power level guaranteed Lw db	115
Sound Pressure Level Lp r=1m	102
EHTMA Class	C/D



The Hammerman Equipment

Unit 19 Cinder Road
 Zone 3 Burntwood Business Park
 Burntwood
 Staffs
 WS7 3FS

www.plasticpiling.co.uk
 @thehammermanco
www.facebook.com/TheHammermanCo

